



Explosionproof Batch Counter

MODEL: EL7320

GENERAL SPECIFICATION
GS.No.GEB404E-3

■ GENERAL

Combined with a flowmeter and valve, the batch counter measures a predetermined amount of process fluid in batching operations. As a piece of explosionproof equipment, the batch counter is suitable for outdoor applications. It saves time and effort in various processes, such as blending materials, dosing with additives, transferring fluid from one tank to another, or shipping process, mainly in chemical, food, and paint industries.

■ FEATURES

1. Flameproof rat

The batch counter is flameproof rated (Ex d IIB T4) and can be implemented in hazardous locations Zone 1 and Zone 2.

2. Easy to opera

- (1) Parameter settings, start, stop, and reset can be done by pressing large pushbuttons on the front panel.
- (2) Improved visibility for outdoor and/or remote applications with large LED display (7-segment, 25.4mm).
- (3) With each operation function (start, stop, and reset) and parameter setting function assigned separately to different buttons, erroneous setting will be prevented.

3. Erroneous setting protecti

Accidental erroneous settings can be prevented by selecting predefined batch settings with the cam switch. Up to five batch settings are available.

4. Accurate batching control

- (1) The valve can be programmed to open and close in two stages for precise batch control.
- (2) Setting anticipated overshoot enables the batch counter to correct the overshoot caused by response lag from the valve.



5. Feasible system constructi

With the ability to operate by remote commands (start, stop, and reset) and batch-end output function, interlocking with other process control systems can be easily done.

6. Increased process safe

- (1) The batch counter controls a valve in two stages (two-stage open, two-stage close). This prevents static inside pipes or tank at the start of operation, and hydraulic shock at valve closure.
- (2) An alarm signal can be generated when there is no pulse input or the batch counter receives a pulse exceeding the batch setting for any reason.

7. Reliable and easy to mainta

- (1) This equipment is highly reliable and easily serviced since internal electronics are assembled as units.
- (2) Every input/output system is isolated by photocouplers and/or relays.
- (3) FeRAM storage retains the total count and other parameters when the power is turned off.

Архангельск (8182)63-90-72
Астана +7(7172)727-132
Белгород (4722)40-23-64
Брянск (4832)59-03-52
Владивосток (423)249-28-31
Волгоград (844)278-03-48
Вологда (8172)26-41-59
Воронеж (473)204-51-73
Екатеринбург (343)384-55-89
Иваново (4932)77-34-06
Ижевск (3412)26-03-58
Казань (843)206-01-48

Калининград (4012)72-03-81
Калуга (4842)92-23-67
Кемерово (3842)65-04-62
Киров (8332)68-02-04
Краснодар (861)203-40-90
Красноярск (391)204-63-61
Курск (4712)77-13-04
Липецк (4742)52-20-81
Магнитогорск (3519)55-03-13
Москва (495)268-04-70
Мурманск (8152)59-64-93
Набережные Челны (8552)20-53-41

Нижний Новгород (831)429-08-12
Новокузнецк (3843)20-46-81
Новосибирск (383)227-86-73
Орел (4862)44-53-42
Оренбург (3532)37-68-04
Пенза (8412)22-31-16
Пермь (342)205-81-47
Ростов-на-Дону (863)308-18-15
Рязань (4912)46-61-64
Самара (846)206-03-16
Санкт-Петербург (812)309-46-40
Саратов (845)249-38-78

Смоленск (4812)29-41-54
Сочи (862)225-72-31
Ставрополь (8652)20-65-13
Тверь (4822)63-31-35
Томск (3822)98-41-53
Тула (4872)74-02-29
Тюмень (3452)66-21-18
Ульяновск (8422)24-23-59
Уфа (347)229-48-12
Челябинск (351)202-03-61
Череповец (8202)49-02-64
Ярославль (4852)69-52-93

сайт: www.oval.nt-rt.ru || почта: oxv@nt-rt.ru

■ GENERAL SPECIFICATIONS

Item		Description						
Type of operation		Pulse addition						
Display	Display	Total count: 6-digit, 7-segment, 25.4mm, Red LED						
		Batch setting: 6-digit, 7-segment, 14mm, Red LED (displays grand total in 9-digit by ▼ button operation)						
		Channel number: 2-digit, 7-segment, 14mm, Red LED (displays error code when alarm is set off.)						
	Operation status indicator	LEDs: RUN (YEL)/ END (GRN)/ ALARM (RED)/ InterLock(BLU)/ ×10 (ORG)/ ×100 (ORG)/ MV (RED)/ SV (RED)/ PUMP (RED)						
Buttons	Channel select	Explosionproof cam switch with 6 notches						
	Pushbutton	φ30 explosionproof pushbuttons: SET(BLK)/ ▼ (BLK)/ ▲ (BLK)/ STOP (RED)/ RESET (YEL)/ START (GRN)						
Buzzer		φ30 explosionproof buzzer for alarm						
Input Signal	Pulse Input	Pulse type	Example Transmitters	Power to Transmitter		Signal Level	Freq. Response	
		2-wire/12V DC 3-wire contact-closure pulse	PG20	13.5VDC	Current capacity: 55mA (with short-circuit protection)	12VDC ON/OFF (Input load resistance: 10kΩ)	Max 50Hz	
		2-wire/12V DC 3-wire open collector pulse	Coriolis flowmeter/NPG60A (E3) FLOWPET-EG	13.5VDC			Max 3kHz (※1)	
		2-wire/12V DC 3-wire voltage pulse	PG30 NPG60A (F)	13.5VDC		"1": more than 5VDC "0": less than 1.5VDC		
		12V DC 2-wire current pulse	PG30S	13.5VDC		"1": 20mADC "0": 4mADC Input load resistance: 510Ω		
		24V DC 2-wire current pulse	PA14/15/25 ULTRA OVAL NPG60A (E)	24VDC		"1": 20mADC "0": 4mADC Input load resistance: 250Ω		
	Remote Input	Start	Form "a" contact		Contact signal/Open collector signal Contact current: 24V DC Max. 20mA Instant signal "ON" width: 200msec Instant signal "OFF" width: 200msec			
		Reset	Form "a" contact					
		Stop	Form "b" contact					
		Channel select	BCD combination of 1 /2 /4					
		Set	Form "a" contact					
		InterLock	Form "a" contact normally short-circuited					
	Parameter Setting	Meter factor setting		0.00010 to 1.99999 (Default: 1.00000)				
		Input pulse freq.		Software-defined frequency: 1/1, 1/10, 1/100 (Default: 1/1)				
		Output pulse freq.		Software-defined frequency: 1/1, 1/10, 1/100 (Default: 1/1)				
		Batch	Batch setting	6 channels: 0 to 999999 counts (Only Ch.1 can be changed on the front panel.)				
			Initial setting	0 to 9999 counts (Default: 80)				
Final setting			0 to 9999 counts (Default: 80)					
Anticipated overshoot			0 to 99 counts (Default: 2)					
Batch-end monitor setting			0 to 99 sec (Default: 5)					
Alarm		Pump output timer		0 to 9999 sec (Default: 30)				
		Missing pulse interval	0 to 999 sec (Default: 5)					
		Overshoot	0 to 99 counts (Default: 2)					
		Leak	0 to 99 counts (Default: 10)					
Output Signal	Upper limit flow signal		Full-open signal MV		Same as power-supply voltage (max. 0.5A) or relay contact (250V AC 0.5A) Refer to the operation chart for ON/OFF of form "a" contact.			
	Partial flow signal		1-stage open signal SV					
	Pump control signal		Relay contact (250V AC 0.5A) form "c" contact					
	Batch-end signal		Static relay (250V AC 0.1A) form "a" contact					
	Alarm signal		Relay contact (250V AC 0.5A) form "a" contact					
	Pulse signal		Open collector NPN transistor output (35V DC 100mA) Pulse width: 150μsec/ 1msec/ 50msec max. 3kHz (※2)					
Power failure backup		Saves data to FeRAM at power-off						
Power source		100/110VAC or 200/220VAC 50/60Hz (Allowable voltage: within ±10% of rated voltage)						
Power consumption		30VA (Power consumed by the batch counter only, excluding power supply for MV/SV.)						
Ambient temperature		-20 to +50°C						
Configuration		Explosionproof rating: Flameproof Ex d IIB T4 (※3)						
Installation		Wall-mount or Stanchion						
Finish		Munsell 2.5PB 5/8, glossy (standard)						
Housing material		Aluminum casting (Stanchion: steel)						
Outline dimensions		300 (W) ×360 (H) ×247 (D) (batch counter body only)						
Weight		Approx. 20kg (batch counter body only)						
Noise resistance		EMC EN55011 EN61000-6-2						

*1: Varies depending on transmission distance and specification of the cable.

(e.g. 100m when open collector pulse with CVVS 1.25sq cable)

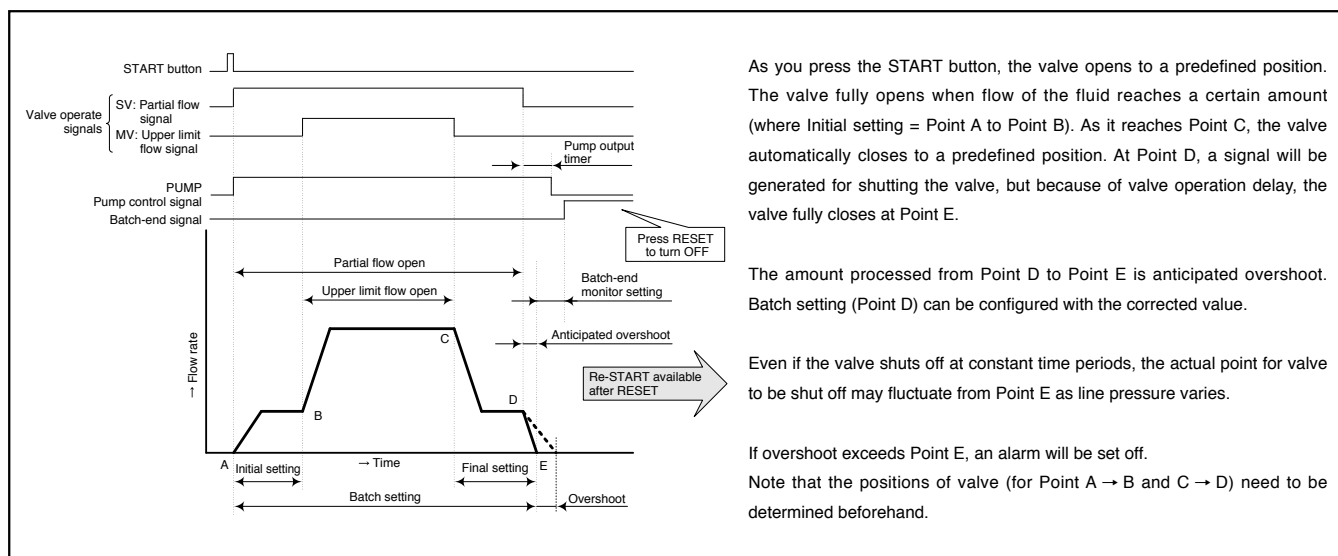
*2: When 150μsec output is selected, transmission distance will be limited depending on cable specification and receiving circuit.

(e.g. with CVVS 1.25sq cable and collector current 20mA, the transmission distance will be limited to 500m.)

*3: Specific pressure-tight packing cable glands are required if the batch counter is to be used for explosionproof purpose.

Five explosionproof plugs are provided with the batch counter.

■ OPERATION CHART



■ PRODUCT CODE EXPLANATION

● Batch Counter Body

Item	Product Code Explanation																Description
	①	②	③	④	⑤	⑥	⑦	⑧	⑨	⑩	⑪	⑫	⑬	⑭	⑮	⑯	
Model	E	L	7	3	2	0	-										Explosionproof batch counter
Power								1									100VAC 50/60Hz
								2									200VAC 50/60Hz
								3									110VAC 50/60Hz
								4									220VAC 50/60Hz
								9									Other
Flow Input								2									2-wire, 12VDC 3-wire contact-closure pulse
								3									2-wire, 12VDC 3-wire voltage pulse
								4									24VDC 2-wire current pulse (4/20mA DC)
								5									12VDC 2-wire current pulse
								6									2-wire, 12VDC 3-wire open collector pulse
Additional Function								9									Other
								1									Standard
Valve Operation Signal								9									Other
								1									Same as supply voltage
								2									Contact-closure output
Installation								9									Other
								1									Wall-mount
								2									Stanchion
Sunshade								9									Other
								0									Not furnished
Hood								1									Furnished
								0									Not furnished
Rubber Button Cover								1									Furnished
								0									Not furnished
Finish								1									Munsell 2.5PB5/8, glossy
								9									Other
Version																A	

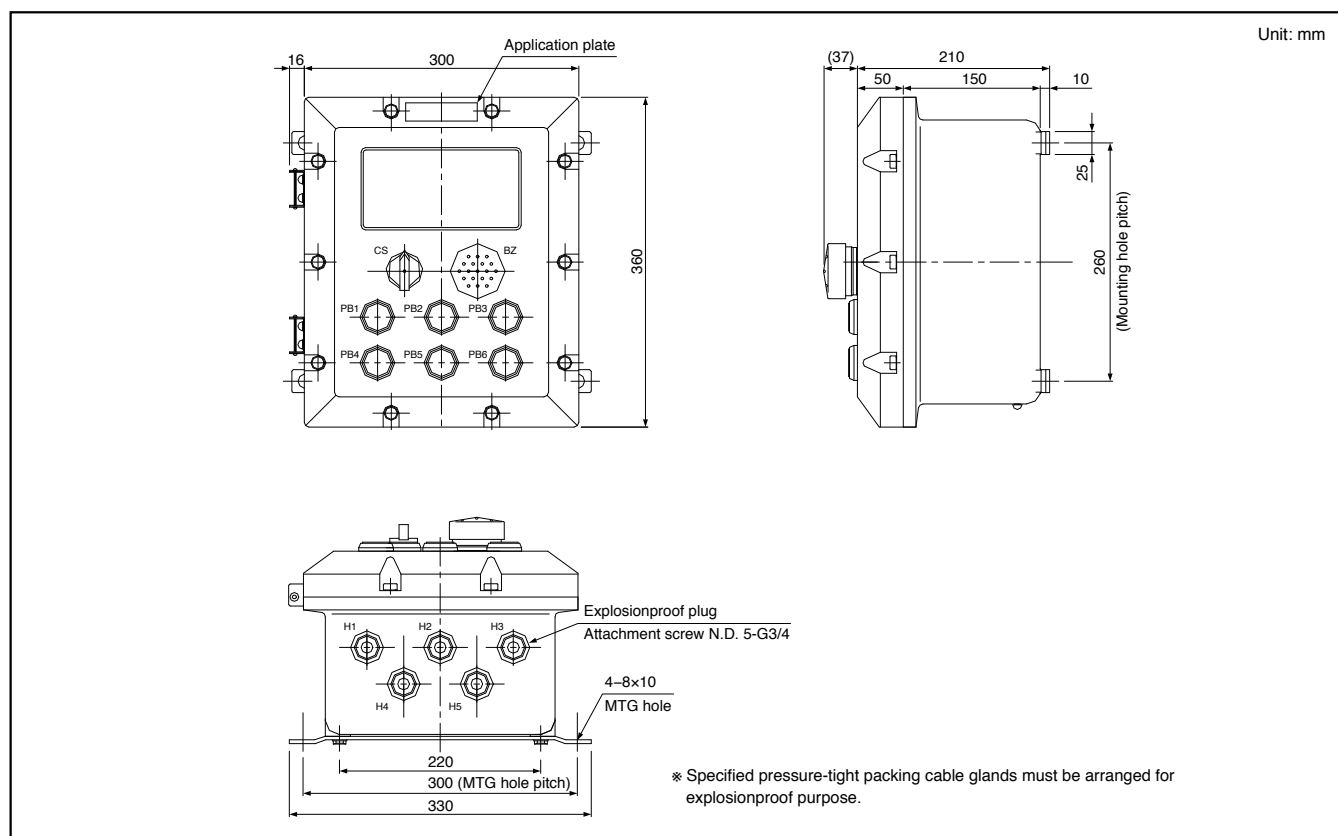
● Code Explanation for Pressure-tight Packing Cable Gland

(This apparatus must be arranged for explosionproof purpose.)

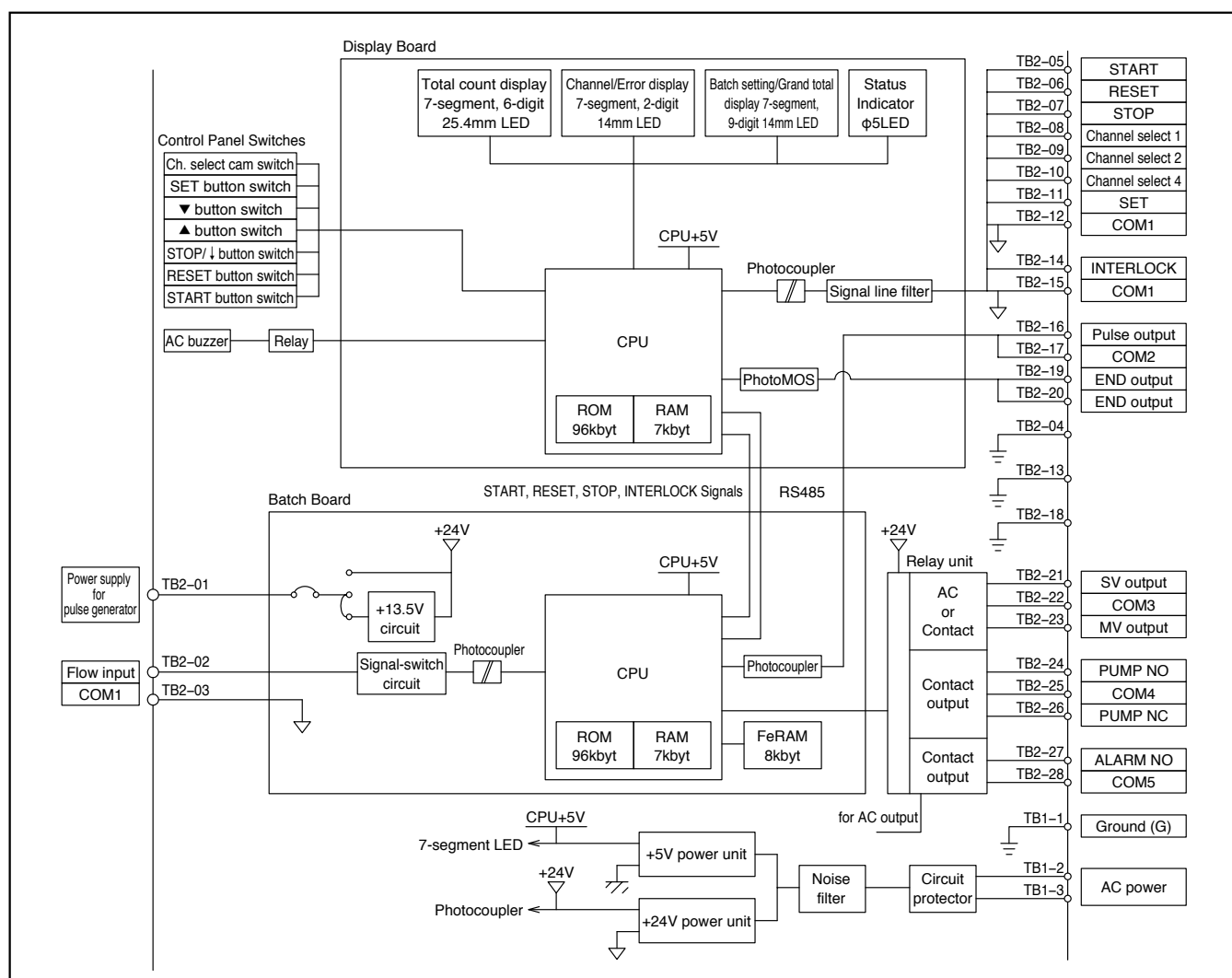
Item	Code Explanation											Description
	①	②	③	④	⑤	⑥	⑦	⑧	⑨	⑩	⑪	
Model	H	P	N	2	1	-						Cable gland
Applicable Cable O.D.							R	0	8	-	C	More than 6mm up to 8mm
							R	1	0	-	C	More than 8mm up to 10mm
							R	1	2	-	C	More than 10mm up to 12mm

Item	Code Explanation											Description
	①	②	③	④	⑤	⑥	⑦	⑧	⑨	⑩	⑪	
Model	H	P	N	2	2	-						Cable gland
Applicable Cable O.D.							R	1	4	-	C	More than 12mm up to 14mm
							R	1	6	-	C	More than 14mm up to 16mm

■ OUTLINE DIMENSIONS



■ BLOCK DIAGRAM



EXTERNAL CONNECTION TERMINALS

Terminal Block

TB02 (M3.5 touchdown structure)

1	3	5	7	9	11	13	15	17	19	21	23	25	27
2	4	6	8	10	12	14	16	18	20	22	24	26	28

TB01 (M4)

1	2	3
---	---	---

Connection Terminals

TB01

Signal	No.	Description
Power	1	G Ground Terminal (*1)
	2	AC (L) 100/110V AC
	3	AC (N) 200/220V AC

*1: To prevent electric shock, fire, and interference from exogenous noise, make sure to ground the terminal.

TB02

Signal	No.	Description
Flow Signal Input	SUP. 1	
	SIG. 2	
	COM.1 3	
	G 4	
Remote Control Input	START 5	
	RESET 6	
	STOP 7	
	SELECT 1 8	
	SELECT 2 9	
	SELECT 4 10	
	SET 11	
	COM.1 12	
	G 13	
	INTERLOCK 14	
Pulse Output	SIG. 16	
	COM.2 17	
	G 18	
Batch-end Output	END 19	Static relay "a" contact
	END 20	
Valve Operation Signal	SV 21	Partial flow signal: one-stage open
	COM.3 22	
	MV 23	
Pump Output	PUMP 24	
	COM.4 25	
	PUMP 26	
Alarm Output	ALARM 27	Relay contact, Form "a" contact
	COM.5 28	

Combinations of SELECT and CH

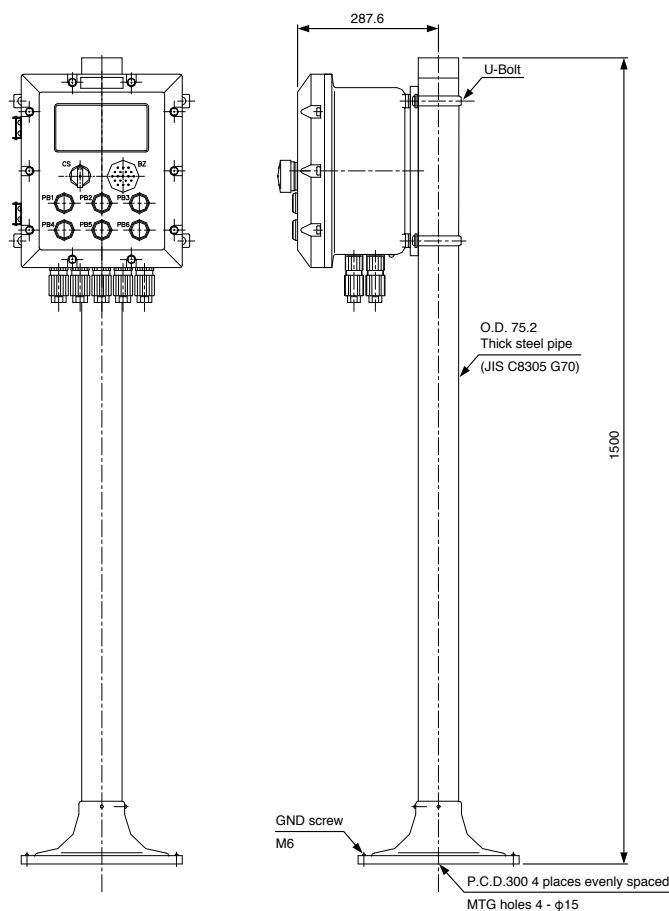
	CH.1	CH.2	CH.3	CH.4	CH.5	CH.6
SELECT 1	ON	OFF	ON	OFF	ON	OFF
SELECT 2	OFF	ON	ON	OFF	OFF	ON
SELECT 4	OFF	OFF	OFF	ON	ON	ON

* Every COM.1 terminal and G terminal is electrically continuous.

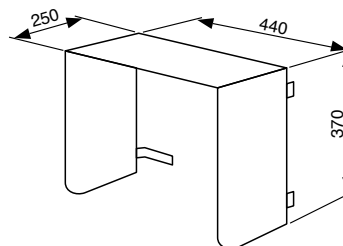
Short-circuit INTERLOCK when not in use

■ OPTIONS

◆ Stanchion

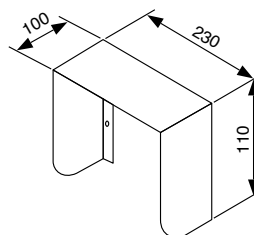


◆ Sunshade



Protects the batch counter from direct sunlight and rain.
Material: SUS unfinished

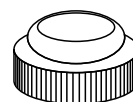
◆ Hood



Covers over the display for better visibility.

Material: SUS
Finish : N1.5 matte

◆ Rubber Cover for Pushbuttons

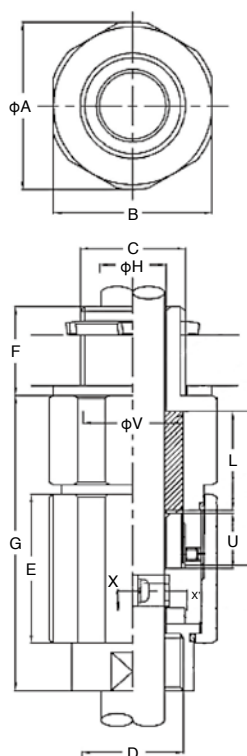


Ensures better waterproof performance by covering the pushbuttons.

◆ Pressure-tight packing cable gland

A wiring apparatus used for leading cables (rubber/plastic) into the counter

Model		HPN21-			HPN22-		
		R8 - C	R10 - C	R12 - C	R14 - C	R16 - C	
Applicable cable O.D.		6 - 8	8 - 10	10 - 12	12 - 14	14 - 16	
Packing	O.D.	21			25		
	I.D.	8	10	12	14	16	
	Thickness	6.5	5.5	4.5	5.5	4.5	
	Length before compression (L)	34			34		
	Length after compression (L)	Min. 25.5			Min. 25.5		
	Effective compressibility	10% approx.			10% approx.		
	Box	I.D. (V)	21.5			25.5	
		I.D. (T)	44			44	
		Depth (U)	17.5			17.5	
	A		38			42	
B		36			40		
C	N.D.	G 3/4			G 3/4		
	Pitch	1.8143			1.8143		
	Grade	B			B		
	D	G 1/2			G 3/4		
E		41.5			41.5		
F		25			25		
G		(78)			(78)		
H		13			17		
J		R14			R12		
K		9	11	13	15	17	
M		21			25		
N		13			17		
O		5			5		
P (min.)		4.5	5.5	6.5	11	12	
Q		8			8		
R		28			32		
S		21			25		



■ PLEASE SUPPLY THE FOLLOWING INFORMATION WHEN YOU INQUIRE:

Item		Specification
1.	Product model	EL7320 - _____
2.	Quantity	_____ units
3.	Finish	<input type="checkbox"/> Munsell 2.5PB 5/8, glossy (standard) <input type="checkbox"/> _____
4.	Application label	Material: Clear acrylic Engraving: Black-on-white Location: Front top Placement: Adhesive Size: 12.5mm × 80mm × 2t Font: Round Gothic Font size: 24Q Letters: _____ _____ _____ _____
5.	Power supply	_____ VAC
6.	Input pulse	Pulse type: _____ Meter factor: _____ Pulse width: _____ Pulse unit: _____ Max. frequency: _____ Hz Combined flowmeter: _____
7.	Output pulse	Pulse unit: same as input pulse Pulse width: <input type="checkbox"/> 150μsec <input type="checkbox"/> 1msec <input type="checkbox"/> 50msec
8.	Valve output	<input type="checkbox"/> Same as power supply voltage <input type="checkbox"/> Relay contact
9.	Batch control	<input type="checkbox"/> 2-stage open, 2-stage close <input type="checkbox"/> 2-stage open, 1-stage close <input type="checkbox"/> 1-stage open, 2-stage close <input type="checkbox"/> 1-stage open, 1-stage close
10.	Options	<input type="checkbox"/> Stanchion Height <input type="checkbox"/> 1500mm (standard) <input type="checkbox"/> _____ <input type="checkbox"/> Sunshade <input type="checkbox"/> Hood <input type="checkbox"/> Pushbutton covers (6pcs) <input type="checkbox"/> Pressure-tight packing cable glands (Up to 5pcs) Applicable cable diameter: <input type="checkbox"/> 6 - 8mm _____ (pcs) <input type="checkbox"/> 8 - 10mm _____ (pcs) <input type="checkbox"/> 10 - 12mm _____ (pcs) <input type="checkbox"/> 12 - 14mm _____ (pcs) <input type="checkbox"/> 14 - 16mm _____ (pcs)
11.	Special notes	

Архангельск (8182)63-90-72
 Астана +7(7172)727-132
 Белгород (4722)40-23-64
 Брянск (4832)59-03-52
 Владивосток (423)249-28-31
 Волгоград (844)278-03-48
 Вологда (8172)26-41-59
 Воронеж (473)204-51-73
 Екатеринбург (343)384-55-89
 Иваново (4932)77-34-06
 Ижевск (3412)26-03-58
 Казань (843)206-01-48

Калининград (4012)72-03-81
 Калуга (4842)92-23-67
 Кемерово (3842)65-04-62
 Киров (8332)68-02-04
 Краснодар (861)203-40-90
 Красноярск (391)204-63-61
 Курск (4712)77-13-04
 Липецк (4742)52-20-81
 Магнитогорск (3519)55-03-13
 Москва (495)268-04-70
 Мурманск (8152)59-64-93
 Набережные Челны (8552)20-53-41

Нижний Новгород (831)429-08-12
 Новокузнецк (3843)20-46-81
 Новосибирск (383)227-86-73
 Орел (4862)44-53-42
 Оренбург (3532)37-68-04
 Пенза (8412)22-31-16
 Пермь (342)205-81-47
 Ростов-на-Дону (863)308-18-15
 Рязань (4912)46-61-64
 Самара (846)206-03-16
 Санкт-Петербург (812)309-46-40
 Саратов (845)249-38-78

Смоленск (4812)29-41-54
 Сочи (862)225-72-31
 Ставрополь (8652)20-65-13
 Тверь (4822)63-31-35
 Томск (3822)98-41-53
 Тула (4872)74-02-29
 Тюмень (3452)66-21-18
 Ульяновск (8422)24-23-59
 Уфа (347)229-48-12
 Челябинск (351)202-03-61
 Череповец (8202)49-02-64
 Ярославль (4852)69-52-93